

**APPROXIMATE LIMITS OF
QUARRY OPERATIONS
(HAYDON BROTHERS AGGREGATE, LLC,
PERMIT NO. 044-9402)**

HEARTLAND PARKWAY

PROJECT: LX2002273
 CREATED BY: BFS
 CHECKED BY: JDB/MAL



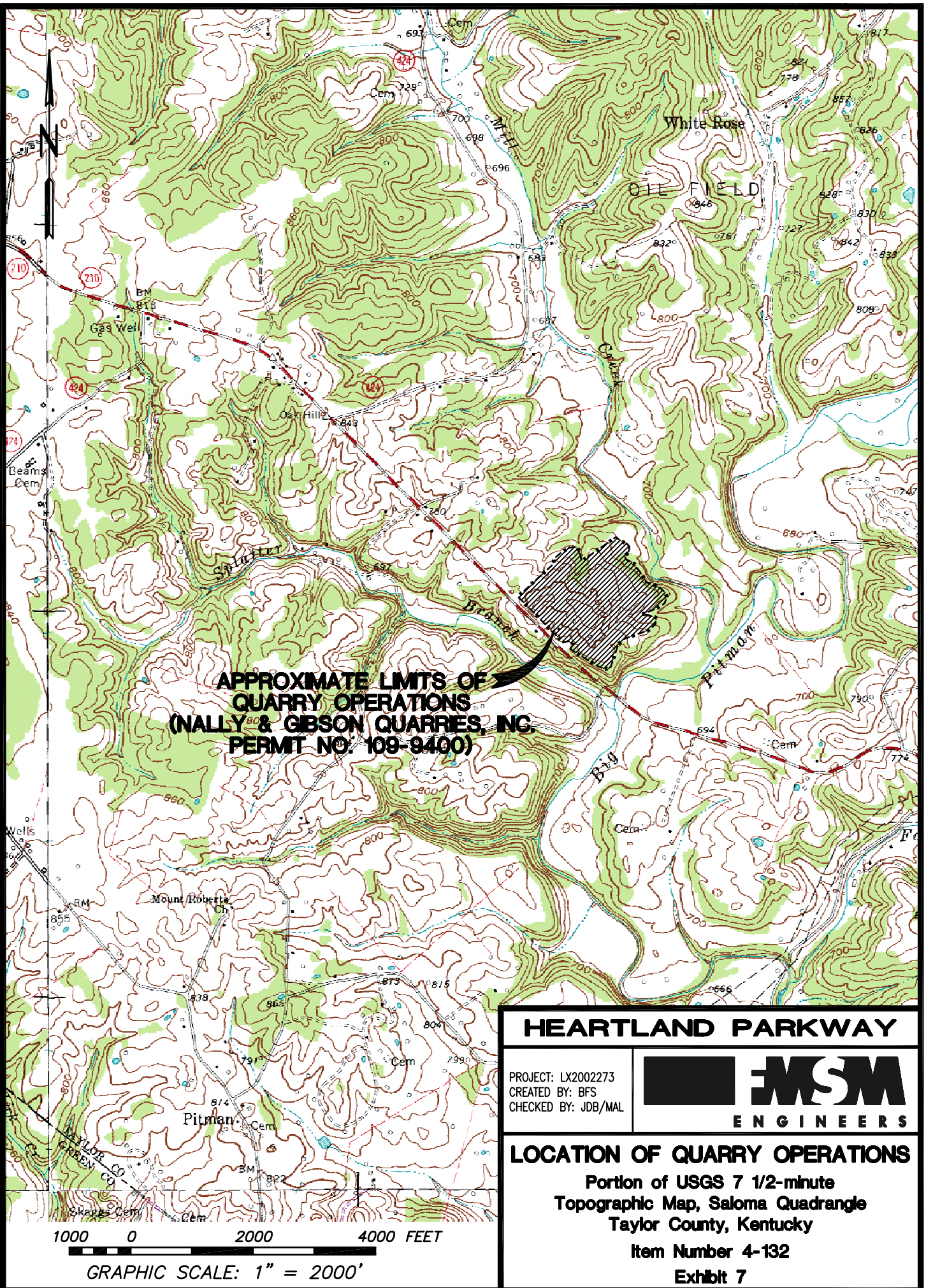
LOCATION OF QUARRY OPERATIONS

Portion of USGS 7 1/2-minute
 Topographic Map, Greensburg Quadrangle
 Green County, Kentucky
 Item Number 4-132
 Exhibit 6

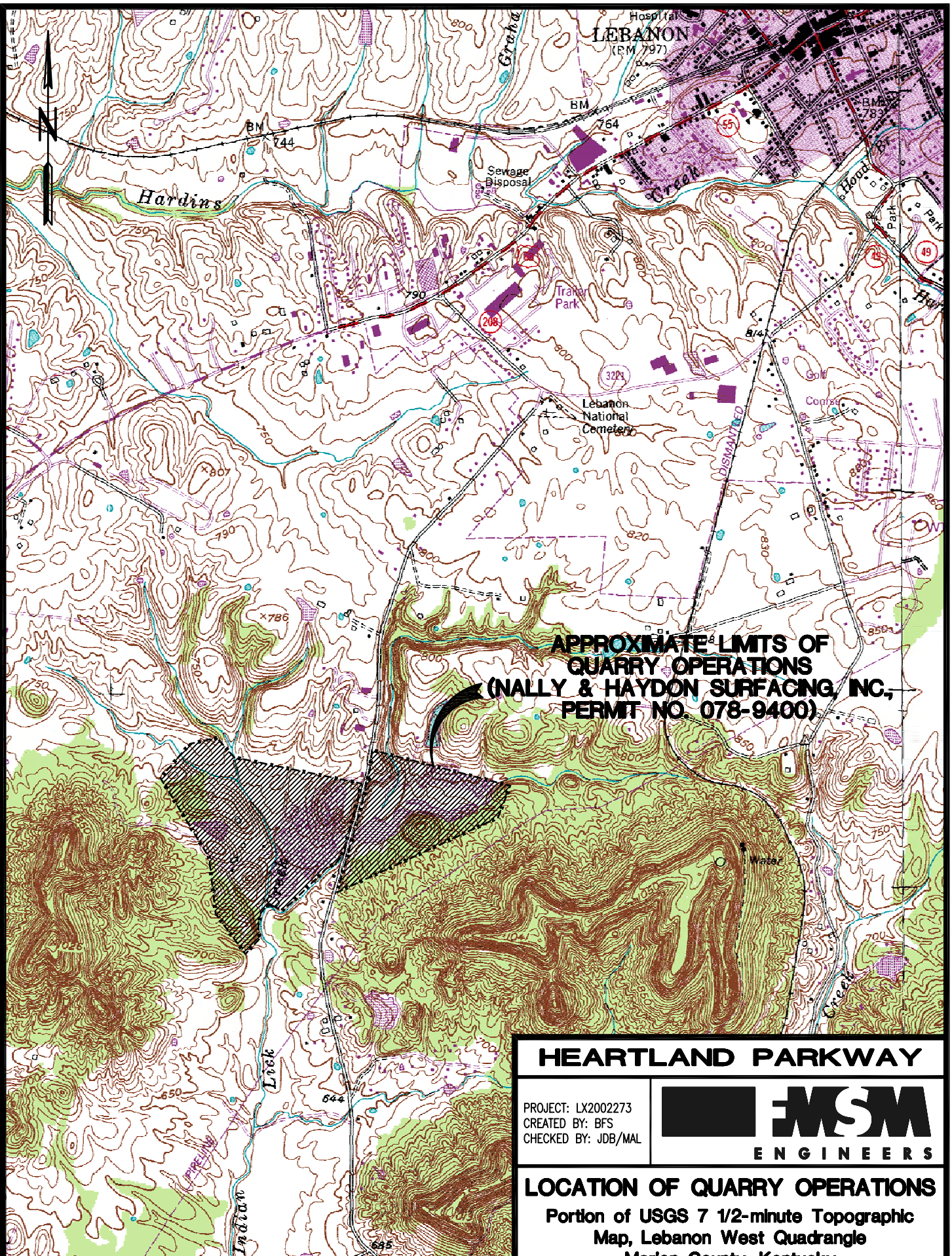


GRAPHIC SCALE: 1" = 2000'

LX2002273\GREEN_HAYDON.DWG



LX2002273\TAYLOR_NALLY.DWG



**APPROXIMATE LIMITS OF
QUARRY OPERATIONS
(NALLY & HAYDON SURFACING, INC.,
PERMIT NO. 078-9400)**

HEARTLAND PARKWAY

PROJECT: LX2002273
 CREATED BY: BFS
 CHECKED BY: JDB/MAL



LOCATION OF QUARRY OPERATIONS

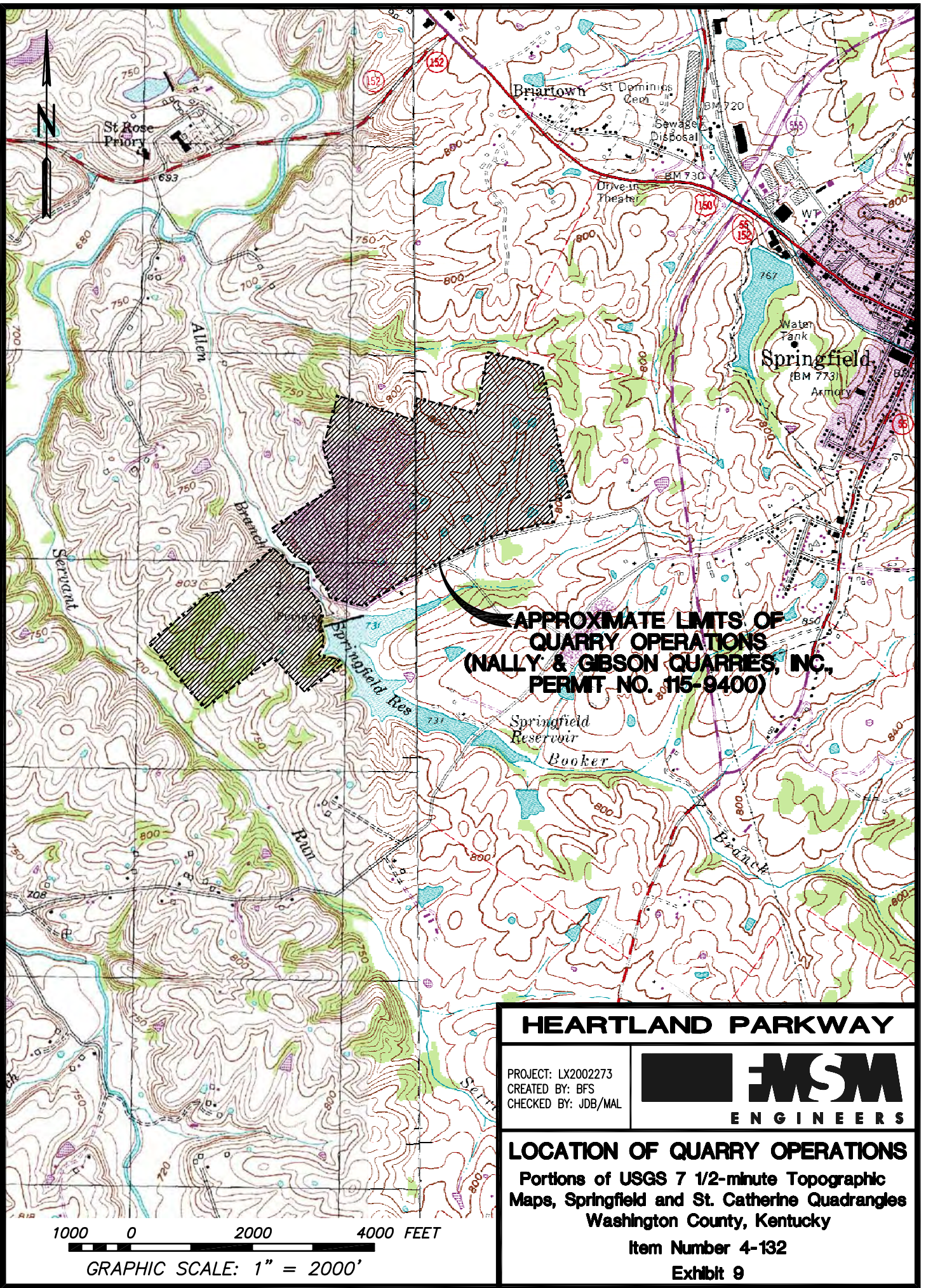
Portion of USGS 7 1/2-minute Topographic
 Map, Lebanon West Quadrangle
 Marion County, Kentucky

Item Number 4-132
 Exhibit 8

1000 0 2000 4000 FEET

GRAPHIC SCALE: 1" = 2000'

LX2002273\MARION_NALLY.DWG



**APPROXIMATE LIMITS OF
QUARRY OPERATIONS
(NALLY & GIBSON QUARRIES, INC.,
PERMIT NO. 115-9400)**

HEARTLAND PARKWAY

PROJECT: LX2002273
 CREATED BY: BFS
 CHECKED BY: JDB/MAL

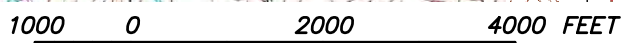


LOCATION OF QUARRY OPERATIONS

Portions of USGS 7 1/2-minute Topographic
 Maps, Springfield and St. Catherine Quadrangles
 Washington County, Kentucky

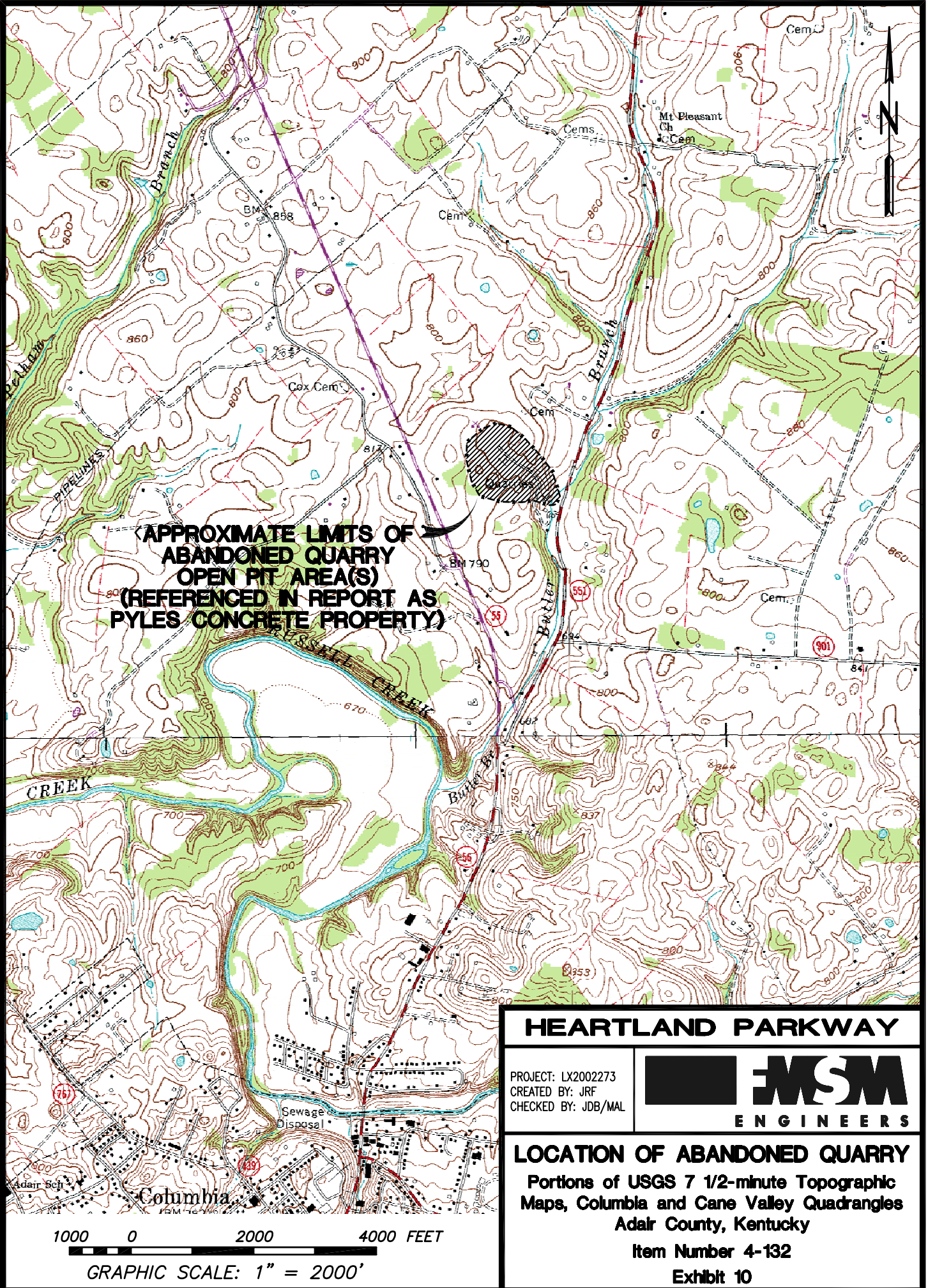
Item Number 4-132

Exhibit 9



GRAPHIC SCALE: 1" = 2000'

LX2002273\WASHINGTON_NALLY.DWG



**APPROXIMATE LIMITS OF
 ABANDONED QUARRY
 OPEN PIT AREA(S)
 (REFERENCED IN REPORT AS
 PYLES CONCRETE PROPERTY)**

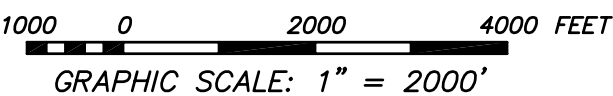
HEARTLAND PARKWAY

PROJECT: LX2002273
 CREATED BY: JRF
 CHECKED BY: JDB/MAL



LOCATION OF ABANDONED QUARRY

Portions of USGS 7 1/2-minute Topographic
 Maps, Columbia and Cane Valley Quadrangles
 Adair County, Kentucky
 Item Number 4-132
 Exhibit 10



LX2002273\CANE_VALLEY.DWG